

To,
The Registrar of Geographical Indication,
Geographical Indication Registry,
Chennai,
Pin 600032.

Handwritten notes in green ink:
"491" (in red)
"Vin formality check completed" (written vertically)
"22/7/14" (written at the bottom right)

Date: - Jul 22, 2014

Subject: - Submission of Geographical Indication application of Lasalgaon Onion

Dear Sir,

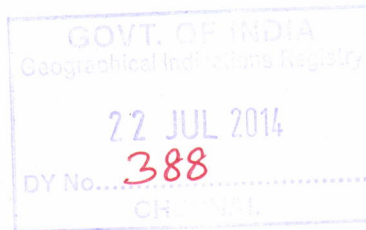
We are happy to submit herewith Geographical Indication application for Lasalgaon Onion from Lasalgaon of Nashik District of Maharashtra State. We are also submitting herewith all documents which are required at the time of submission of GI application to the GI registry. These documents are prepared according The Geographical Indications of Goods (Registration & Protection) Act, 1999.

Kindly acknowledge the submitted documents and do the needful.

With regards

Handwritten signature in blue ink

Prof. Ganesh S. Hingmire
Chairman,
GMGC,
Pune.



APPLICATION No.
491

केवल तीन महीने के लिये ही वैध
VALID FOR THREE MONTHS ONLY
Issuing Branch: SBH-LASALGAON
कोड क्र / CODE No: 21335
Tel No. 02550-266893

स्टेट बैंक ऑफ हैदराबाद
State Bank of Hyderabad
DEMAND DRAFT

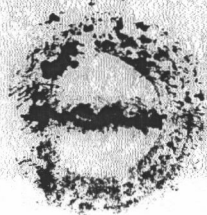
₹50,000/- एवं अधिक के लिखत दो अधिक दिनों तक प्रवर्धमान होने पर ही वैध है।
INSTRUMENTS FOR ₹50,000/- & ABOVE ARE NOT VALID UNLESS SIGNED BY TWO OFFICIALS

1	9	0	7	2	0	7	4
D D M M Y Y Y Y							
9	या इसके आदेश पर						
8	OR ORDER						
7	5000.00						
6	मूल्य प्राप्त / VALUE RECEIVED						
5	SRBH						
4	State Bank of Hyderabad						
3	SRBH						
2	SRBH						
1	SRBH						

मांगे जानेपर REGISTRAR GEOGRAPHICAL INDICATION REGISTRY CHENNAI*****
ON DEMAND PAY
Five Thousand Only



IOI 600008592327 Key: SUKBUS Sr. No: 536251 AMOUNT BELOW 5001(5/4)



स्टेट बैंक ऑफ हैदराबाद
STATE BANK OF HYDERABAD
अदाकर्ता शाखा / DRAWEE BRANCH: SBH - SERVICE BRANCH, CHENNAI
कोड क्र / CODE No: 20707
(हस्ताक्षर नमूना क्र. / S.S. NO.)

Signature
11353



⑈592327⑈ 000004000⑈ 600008⑈ 16



सत्यमेव जयते

Geographical indications Registry

Intellectual Property Building,
G.S.T. Road, Guindy, Chennai - 600 032

Phone: 044-22502091 & 92 Fax : 044-22502090

E-mail: gir-ipo@nic.in



INTELLECTUAL
PROPERTY INDIA

Receipt

CBR NO :2454

Date : 22-07-2014

TO

Generated by :BABU

PROF. GANESH S. HINGMIRE,
GMGC, 210-B, ASHOKA PAVILION, NEAR NIV, DR. AMBEDKAR ROAD, CAMP,,
PUNE,
MAHARASHTRA,
411 001,
INDIA

C B R Details :

Application No	Form No	Class	No of Class	Name of GI	Goods Type	Amount Calculated
491	GI-1A	31	1	Lasalgaon Onion	Agriculture	5000

Payment Details :

Payment Mode	Cheque/DD /PostalNO	Bank Name	Cheque/DD/Postal Date	Amount Calculated	Amount Paid
DD	592327	State Bank of Hyderabad	19-07-2014	5000	5000

Total Calculated Amount in words : Rupees Five Thousand only

Total Received Amount in words : Rupees Five Thousand only

*** This is electronically generated receipt,hence no signature required ***

B. S. S. S.
Received
22/7/2014

Received Rs. 5000 in cash/
Cheque/DD/MO on 22/07/14
vide entry no. 2454 in the GI Application for Lasalgaon Onion
register of valuables
S. Saranya
Cashier
D.D.O.

THE GEOGRAPHICAL INDICATIONS OF GOODS
(REGISTRATION & PROTECTION) ACT 1999

FORM GI -1

A: Application for the registration of a Geographical Indication in part A of the register: Section 11(1) of Geographical Indication Act, 1999 and rule 23(2) of Geographical Indication of Goods (Registration and Protection) Rules, 2002 Fee: Rs. 5,000/- (See entry No 1 A of the First Schedule)

Application is hereby made by GMGC for the registration on behalf of 'Baliraja Shetkari Gat' in part A of register of the Geographical Indication furnishing the following particulars.

NAME OF THE APPLICANT: Baliraja Shetkari Gat

ADDRESS: Kotamgaon Road, Lasalgaon, Nifad taluka, Nashik District, Pin code 22306, Maharashtra, India

GEOGRAPHICAL INDICATION: LASALGAON ONION

CLASS: 31

GOODS: Lasalgaon Light Red Onion, Agriculture product

- A NAME OF APPLICANT:** Baliraja Shetkari Gat
- B ADDRESS:** Kotamgaon Road, Lasalgaon,
Nifad taluka, Nashik District,
Pin .422306,
Maharashtra, India
- C LIST OF ASSOCIATION OF PERSONS/PRODUCER/ ORGANISATION/AUTHORITY** Baliraja Shetkari Gat,
- D TYPES OF GOODS** Class 31, Agricultural product
- E SPECIFICATION** **Lasalgaon light red onion variety**
- Lasalgaon onion is **light red in colour** while other varieties are dark red in colour. Due to its significant colour it has more demand in the market.
- This variety is also known as **Niphad red, Nashik red.**
- This variety is cultivated in Rabi season i.e. (Oct-Mar).
- The lasalgaon onion has strong smell and having more pungent taste due to high percentage of Sulphur in the Lasalgaon soil.
- The size of onion bulb of lasalgaon Light red variety is **bigger as compared to other variety.**
- This variety has approximately **16-17 layers of outer dried intact scales.** This number of

intact dried scales is more as compared to other varieties which leads to strong protection to inner bulb of onion.

The Total Soluble Sugar Content is high approximately 17-18 °Brix¹

It also has Dry matter Content (17.67 to 17.27) % which is high. This high dry matter content increases the shelf life of Lasalgaon Light red onion.

Due to high percentage of TSS and DMC, deterioration is less and the weight loss is less.

The Storage life of this variety is near **about 8-9 months** which is very high as compared to other varieties.

It contains Vitamin B2, Vitamin C and minerals Ca and Fe.

This variety is comparatively high yielding variety. The average yield from this variety is 100 Q/Ha.

F. NAME OF GEOGRAPHICAL INDICATION AND PARTICULARS

Lasalgaon Onion
Goods: Class 31, Agriculture

¹Effect of intra-row spacing on yield and quality of some onion varieties (*Allium cepa* L.) at Aksum, Northern Ethiopia Yemane Kahsay¹*, Derbew Belew² and Fetien Abay³ Axum Agricultural Research Center, Axum, Ethiopia. Jimma University, Jimma, Ethiopia. Mekelle University, Mekelle, Ethiopia; Vol. 7(12), pp. 613-622, December 2013 ;DOI: 10.5897/AJPS2013.1053 ;ISSN 1996-0824 ©2013 Academic Journals; Accepted 21 November, 2013

G DESCRIPTION OF LASALGAON ONION

product

Lasalgaon light red onion variety

- **Variety:** Lasalgaon light red also known as Niphad red, Nashik red
- **Cultivation period:** - Rabi (Oct-Nov. to April-June).
- **Duration :** Oct -March
- **Color:**light red
- **Taste:** Strong pungent
- **Aroma:** Strong
- **Bulb diameter²:** 4-6 cm (mean 5.48cm)
- **Bulb length:** 4-6 cm(mean 4.84 cm)
- **Plant Height:**40-50 cm
- **Overall acceptability:** Good
- **Number of outer dried intact scales:**³16-17
- **TSS⁴(Total soluble sugars content) :** High(17-18 °Brix⁵)
- **Dry matter content**

² Evaluation of Different Varieties of Onion and Their Transplanting Times for Off-Season Production in Mid Hills of Nepal- Ishwori P. Gautam, BhogendraKhatri and Govinda P. Paudel Regional Agricultural Research Station-NARC, Lumle, Kaski, Nepal ; Nepal Agric. Res. J. Vol. 7, 2006

³ Information provided by farmers

⁴ Post – Harvest Research (Post Harvest Research Complex Of N.H.R.D.F At Lasalgaon, Nashik) ([Http://www.Nhrdf.Com/Contentpage.Asp?Sub_Section_Code=116](http://www.nhrdf.com/contentpage.asp?sub_section_code=116))

⁵Effect of intra-row spacing on yield and quality of some onion varieties (*Allium cepa* L.) at Aksum, Northern Ethiopia Yemane Kahsay¹*, Derbew Belew² and Fetien Abay³ Axum Agricultural Research Center, Axum, Ethiopia. Jimma University, Jimma, Ethiopia. Mekelle University, Mekelle, Ethiopia; Vol. 7(12), pp. 613-622, December 2013 ;Doi: 10.5897/Ajps2013.1053 ;Issn 1996-0824 ©2013 Academic Journals; Accepted 21 November, 20132

(%): High (17.67 to 17.27)

- **Shelf life of onion bulb:** 8-9 months⁶
- **Level of deterioration –** less
- **Yield –High** approximately 100 Q/ha

H. GEOGRAPHICAL AREA OF PRODUCTION AND MAP

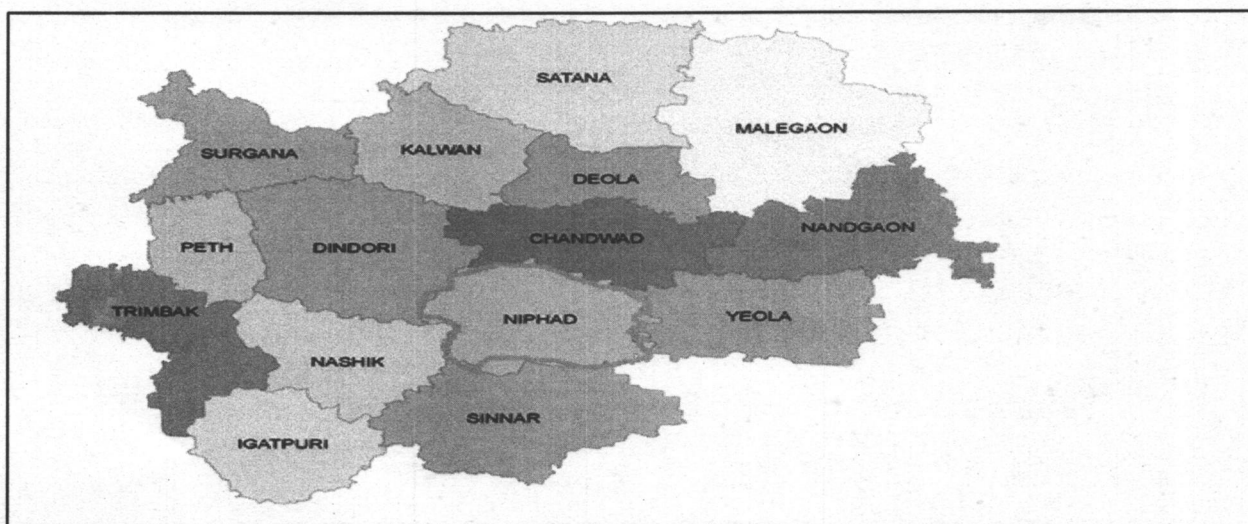
Lasalgaon is situated in Niphad Taluka of Nashik district Maharashtra.

Geographical coordinate for Lasalgaon are:

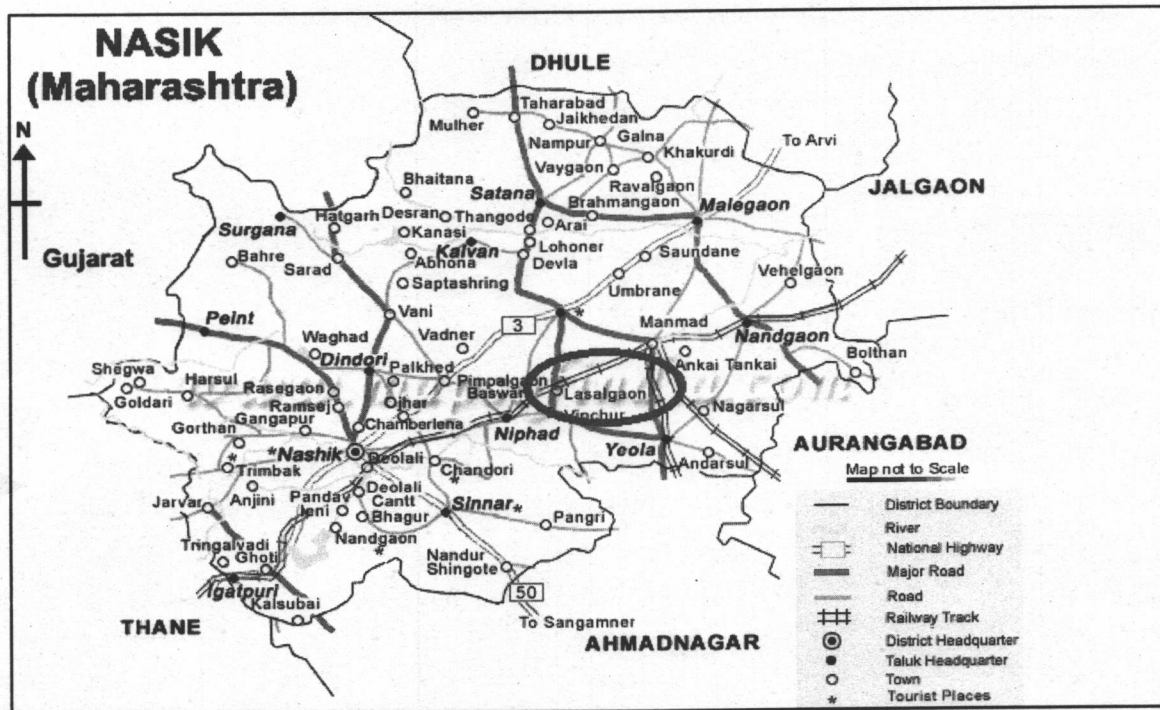
Latitude : 20° 9' 0" North

Longitude: 74° 14' 0" East

Elevation: 581 meters (1906 feet).



⁶ (Post – Harvest Research) Post Harvest Research Complex Of N.H.R.D.F At Lasalgaon, Nashik



Lasalgaon is situated in Niphad Taluka, (Nashik, Maharashtra, India). Lasalgaon is located at 20.15°N 74.23°E. It has an average elevation of 581 metres (1906 feet). The area under cultivation in Lasalgaon is 600 -650 ha. In Lasalgaon 99% agricultural area is used for cultivation of onion. More than 1000 farmers are involved in the onion cultivation. Lasalgaon onion market annually handles about 2.5 lakhs tonnes of onion.

Lasalgaon has better market facility, more number of established traders, market being very close to rail stations. These features accelerate onion marketing in this area.

I.PROOF OF ORIGIN⁷

Lasalgaon is the biggest market for onions not only in India but also in Asian continent. In Asian market, the rates for onion of are influenced by Lasalgaon onion market rate.

Lasalgaon is situated in Niphad Taluka of Nashik district. Maharashtra is the biggest producer of onions in India, contributing over one fourth of the total production of onion. The onions from Lasalgaon Market are transported to many places in India and exported to Singapore and Maleshia.

According to farmers from Lasalgaon, Lasalgaon light red onion variety has been grown since many generations in this area. Lasalgaon has traditional method of onion storage (chawl) and cultivation method practiced since last six decades.

Above Chart gives the highlights of Onion Production in India and Scenario of Indian Market of Onion. Our total Indian Production is 1.60 lakh tones every year whereas our yearly consumption of onion in the domestic market is 120 M.T. and our yearly export is 18 MT and Indian onion market having annual turnover of Rs. 10,000 corers.

⁷Trends In Area , Production & Productivity Of Onion In Maharashtra - By Barakade A.J, Dr.Lokhande T. N., International Referred Research Journal, March, 2011. Issn- 0974-2832, Rni-Rajbil2009/29954, Vol.II *Issue-26

J.GEOGRAPHICAL SIGNIFICANCE AND UNIQUENESS OF LASLGAON ONION

Geographical significance:

Lasalgaon light red onion variety is popular due to its light red color, pungent taste, shelf life and its bigger size. Soil, Climate and rainfall at Lasalgaon plays vital role in the production of best quality onion in this region.

Soil⁸

Generally, onions can be grown on all types of soil provided the soils are deep friable and highly fertile. Sandy loams to clay loam soils are best suited for onion cultivation. For good yield and quality onion bulbs, the optimum soil pH range is required between 6.5 to 7.5.

The black soil of Lasalgaon village contains high alumina and carbonates of calcium and magnesium with variable amounts of potash, low nitrogen and phosphorus. The degree of acidity or alkalinity of soil of Lasalgaon is found to be mildly, moderately alkaline i.e. optimum range. The soil pH ranges from 6-8(alkaline). The soil has electrical conductivity (EC) range as 0.092 to 0.93 values.⁹; indicate good quality soil and having less soluble salt content. The soil has high sulphur content. Due to this high content of sulphur¹⁰ the taste of onion become more pungent. The soil has good drainage which is essential to get higher productivity of onion. Onions are very sensitive to water logging.¹¹

⁸Bajirao.B.Ahire and SomnathArote 'Studies On The Soil Quality Parameters And Awareness

⁹Bajirao.B.Ahire and SomnathArote 'Studies On The Soil Quality Parameters And Awareness

¹¹ Impact of excess rains on yield, market availability and prices of onion; J.S. Samra

Rainfall

Nashik district has average rainfall 2600 and 3000 mm.

There is wide variation in the rainfall received at various blocks. Most of the rainfall is received at various blocks. Most of the rainfall is received from June to September.

Temperature

Temperature Range in Lasalgaonis near about 25-40⁰.

Humidity

The relative humidity ranges in this area is near about 43% to 62%.

The air is very humid during the south-west monsoon season. In the post-monsoon, cold and summer seasons the air is dry. Thus weather and soil of Lasalgaon are favourable for the production of good quality of Lasalgaon Light red variety of onion.

Uniqueness of Lasalgaon Onion

- Lasalgaon onion is light red in colour while other varieties are dark red in colour .Due to its significant colour it has more demand in the market. This variety is also known as Niphad red, Nashik red, Lasalgaon light red.
- This variety is cultivated in Rabi season i.e. (Oct-Mar).

Natural Resource Management Division Indian Council of Agricultural Research, KrishiAnusandhanBhavan, New Delhi - 110 012.;Y.S. Ramakrishna, S. Desai, A.V.M. SubbaRao, C.A. Rama Rao, Y.V.R. Reddy,G.G.S.N. Rao, U.S. Victor and P. Vijaya Kumar Central Research Institute for Dryland Agriculture Saidabad P.O., Santoshnagar, Hyderabad – 500 059 K.E. Lawande and V.S.R. Krishna Prasad;National Research Centre for Onion and Garlic Rajgurunagar, Maharashtra;K.L. Srivastava; National Horticultural Research and Development Foundation

Nashik, Maharashtra

- The lasalgaon onion has Strong smell and taste is more pungent due to high percentage of Sulphur in the Lasalgaon soil.
- The Size of onion bulb of lasalgaon Light red variety is bigger approximately

Onion Bulb diameter: 4-6 cm

Onion Bulb length: 4-6 cm.

Due to this proper size the onion are easy for using (cutting) so there is less wastage.

- This variety has approximately 16-17 layers of outer dried intact scales. This number of intact dried scales is more as compared to other varieties. This leads to increase the protection to inner bulb of onion.
- The Total Soluble Sugar Content is high approximately it is (17-18 °Brix)
- It also has Dry matter Content (17.67 to 17.27)% which is high. This increases storage life of Lasalgaon Light red onion. Due to high percentage of TSS and DMC, deterioration is less and the weight loss is less.
- The Storage life of this variety is near about 8-9 months which is very high as compared to other varieties.
- It contains Vitamin B2, Vitamin C and minerals ,Ca and Fe.
- This variety has many medicinal properties.
- This variety is comparatively high yielding variety. The average yield from this variety is 100 Q/Ha.

- **Storage system:** Generally, the harvested onion bulbs are stored in locally designed traditional structures all over the country, where 50 to 60 per cent losses incurred due to improper aeration (Pandita, 1994). Sometimes the entire produce is damaged so severely that it makes difficult to inhale in surrounding areas. Resultantly, farmers have no option to sale out their produces immediately after harvest at marginal rate.

Traditionally Bamboo made Chawl is used for drying and storing harvested onion. Now a days the improved storage structures for large scale commercial onion storage have been built by NAFED at its Pimpalgaon and Lasalgaon complex in Nashik, Maharashtra. These are multi-tier structure provided with bottom aeration. They are constructed in raised platform avoiding direct contact with soil, sun or rain. The loss in such structures is reduced to 27.7 % from 55.66% in ordinary conventional stores (Pandia, 1994).

Comparison of Lasalgaon Light red onion with other varieties ¹²

Varieties	Dark Red	Light Red
Producing area	Other areas in Nashik	Lasalgaon
Cultivation period	Kharif (May-July to Oct-Nov.)	Rabi (Oct-Nov. to March)
Color	Dark red	Light red
Taste	Bit sweet	Strong pungent
Storage	15 days	8-9 months
Yield	70-80Q/ha	100Q/ha
Moisture content	High	less
Outer dried intact scales	Thin	thick ¹³
Plant Height	1 to 2 feet	1 feet 1.5 feet

¹² Information Provided By Farmers And Scientist

¹³ "Onion Marketing In India – A Case Study Of Maharashtra- Dr.VasantBaburaoKodagPrincipal,G.A.Colege Of Commerce,Sangli. (Maharashtra); Volume :1/Issue :3 /October- 2013/ Issn2321-7073

K. MEHTOD OF PROPAGATION

Generally the production of onion is taken in three seasons, i.e. Kharif (May-July to Oct-Dec.) Late-Kharif (Aug-Sep. to Jan-Mar) and Rabi (Oct-Nov. to April-June). The Lasalgaon Light red variety is grown in Rabi season which is October to March.

Best time for sowing of Lasalgaon Light red variety is October-November. The field is ploughed to a fine tilth by 4 -5 times with a sufficient interval between two ploughings. The ploughings is done by tractor '*deshiplaugh*'.

The field is then divided into beds and channels. It is good to have small sized beds for proper irrigation and other farming activities. Seedlings are transplanted in flat beds. Transplanting is done in November.

The spacing of 15 cm from line-to-line and 10 cm from plant to plant is ideal. For getting quality bulbs, 1.5-2 cm sized bulblets are considered best for planting. Onion is shallow-rooted crop. The water requirement of this crop at initial growth phase is less. After 21 days irrigation is required.

Harvesting takes in 45-90 days from field setting for green onions and 65-150 days for bulb depending upon variety / types. Onion for sale as dried bulbs or for storage should be harvested after tops have started falling over.

The yield of Lasalgaon Light red onion is 100Q/Ha.

L. INSPECTION BODY

Baliraja Shetkari Gat will work as a Inspection body, it will form an internal group consisting Agri-experts, scientist, farmers, GI experts to monitor the quality norms.

M. Others:

Uses¹⁴

1. Onion is one of the most important vegetable crops.
2. Onion is used directly with daily meals. It is mixed in other vegetables and soups as spice and flavoring agent.
3. It is used both for cooking and as a condiment for flavoring
4. It is used in making sauce, ketch-up and chutnee.
5. Dried onion chips and powder have great demand for export.
6. It contains vitamin B and vitamin C and minerals Ca and Fe.
7. It has medicinal properties and used against ear-ache, colicpain etc.

¹⁴ <http://agriinfo.in/default.aspx?page=topic&superid=1&topicid=1159>

GI APPLICATION No.
491

Images of Lasalgaon Light Red onion

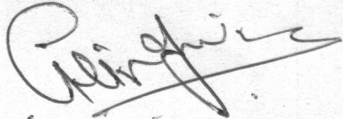


Along with the Statement of Case in Class 31 in respect of Lasalgaon Onion in the name(s) of Baliraja Shetkari Gat, whose address is Kotamgaon Road, Lasalgaon, Nifad taluka, Nashik District, Pin .422306, Maharashtra, India, Who claims to represent the interest of the producers of the said goods to which the geographical indication relates and which is in continuous use since in respect of the said goods.

- The Application shall include such other particulars called for in rule 32(1) in the Statement of Case.
- All communications relating to this application may be sent to the following address in India:

Ganesh S. Hingmire, 959, Budhwar Peth, Pune, Pin-411002, Maharashtra, India.

SIGNATURE



(GANESH S. HINGMIRE
NAME OF THE SIGNATORY