

LIFE The Tough Get Going



LIFE 16 ENV/IT/000225 - LIFE TTGG

www.lifettgg.eu

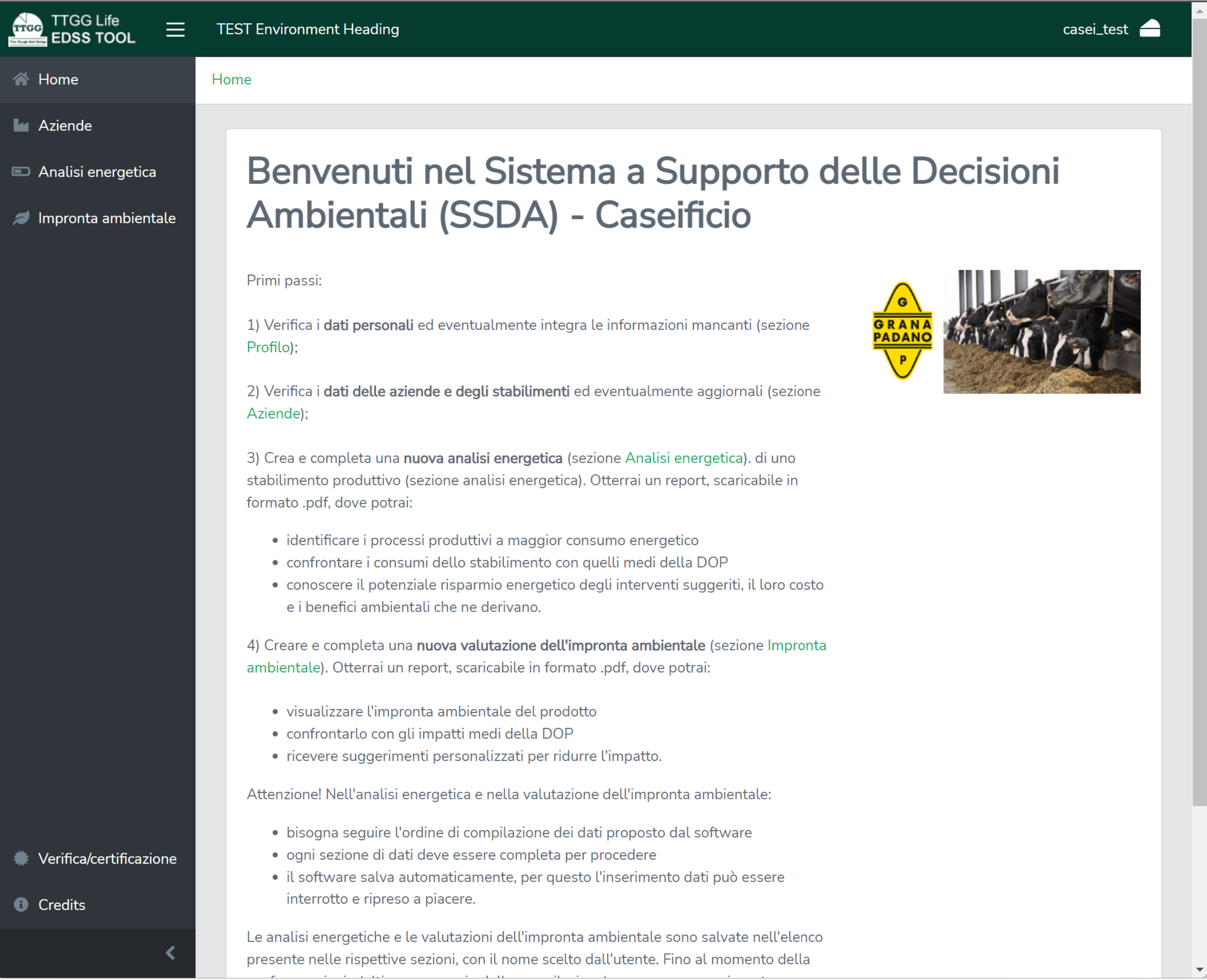
**EDSS software for
energy saving and
environmental
footprint
evaluation**

Matteo Muscherà
ENERSEM

Online event – June 28th, 2022

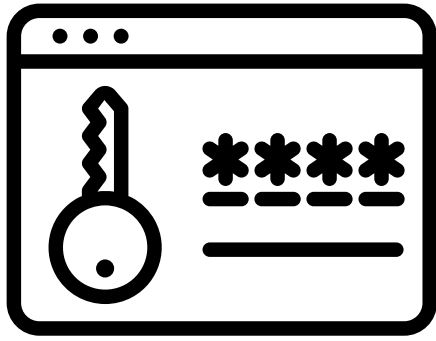


What's EDSS?



E nvironmental
D ecision
S upport
S ystem

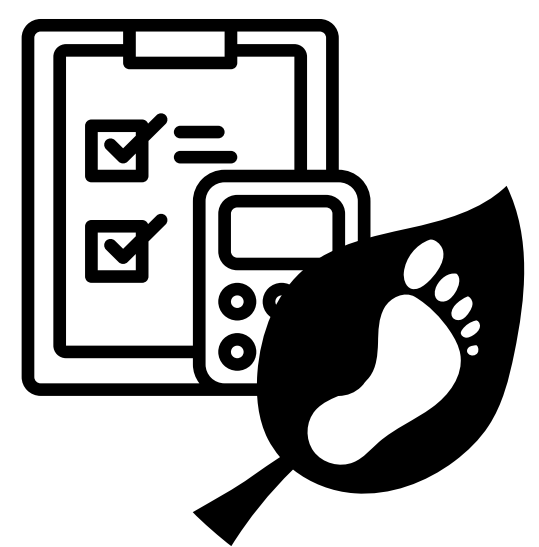
EDSS is a web application, accessible via Internet browser with private credentials



What EDSS does

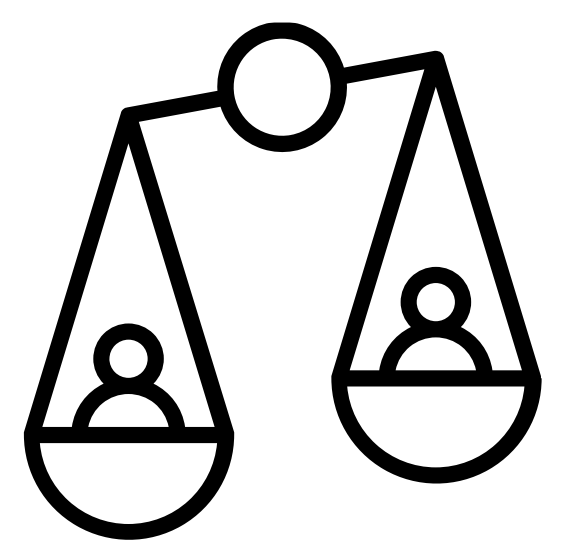
TO KNOW

Environmental footprint
and energy
performance
assessment



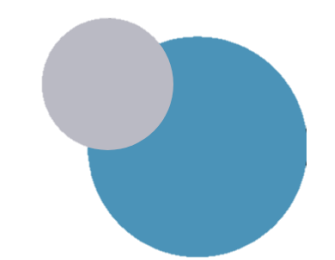
TO COMPARE

Calculated footprint
comparison with the
average of the other
Consortium members



TO IMPROVE

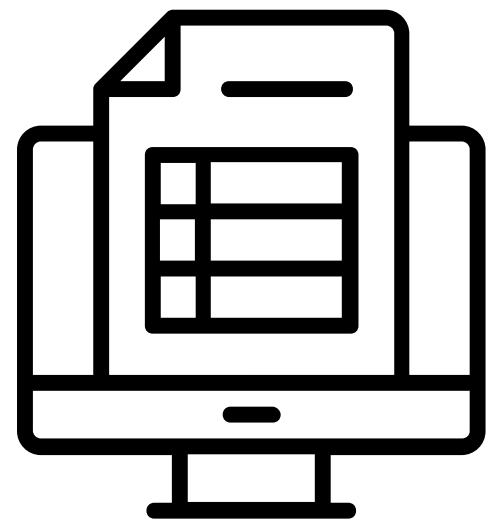
Environmental footprint
reduction and energy
saving strategies



How does it work

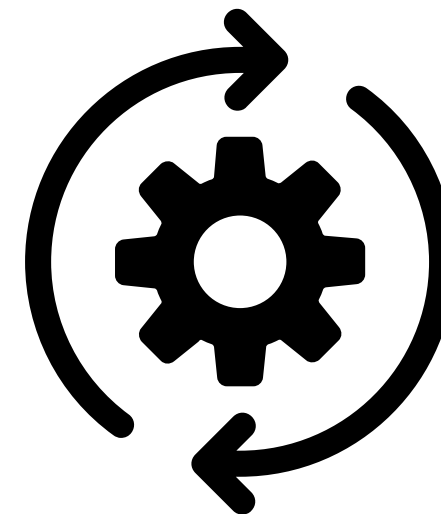
INPUT DATA

Information about products, energy and raw material consumption, product destination, ...



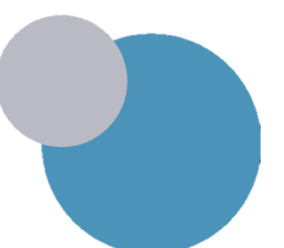
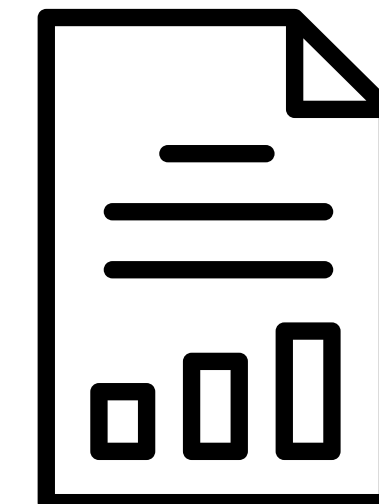
CALCULATION

Automatic data analysis, Life Cycle approach (LCA) following PEF methodology

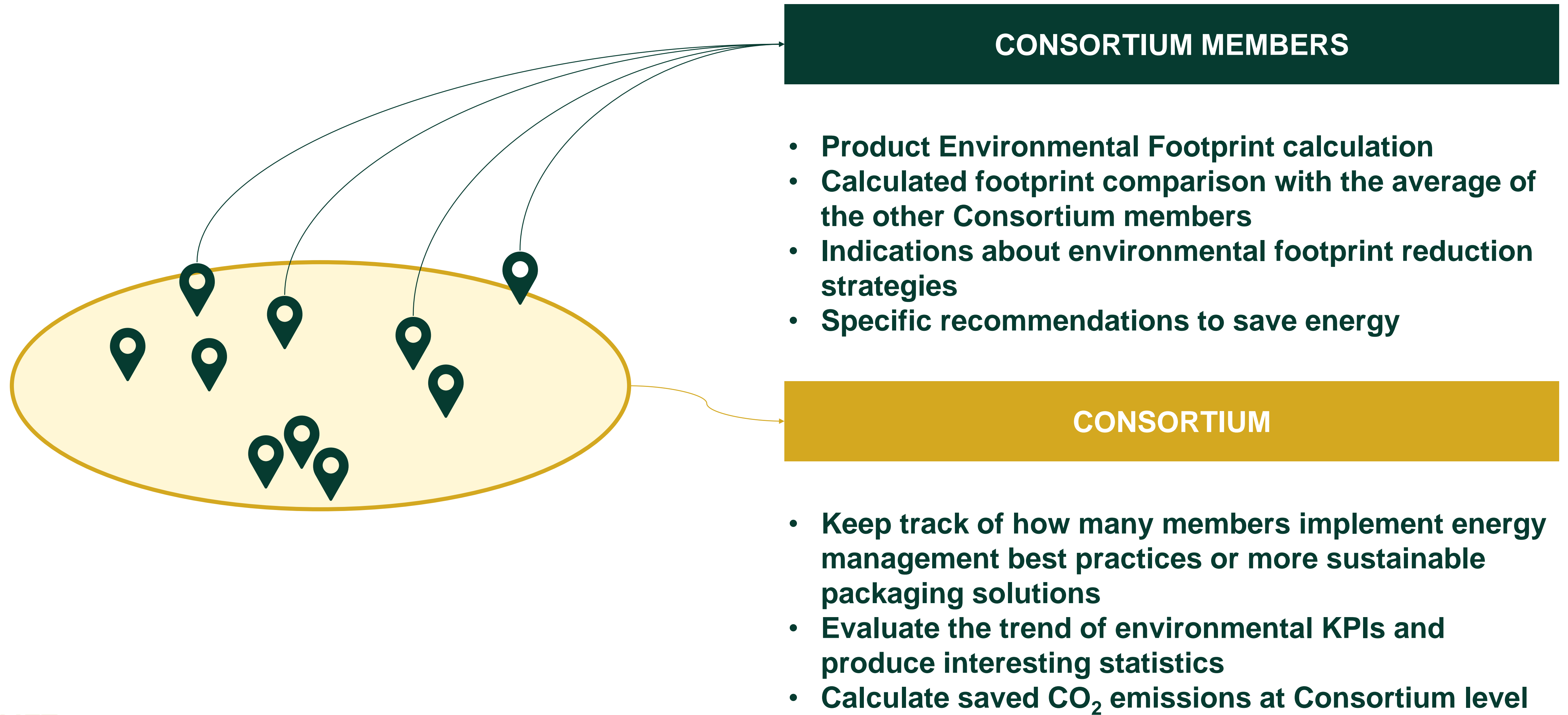


RESULTS REPORT

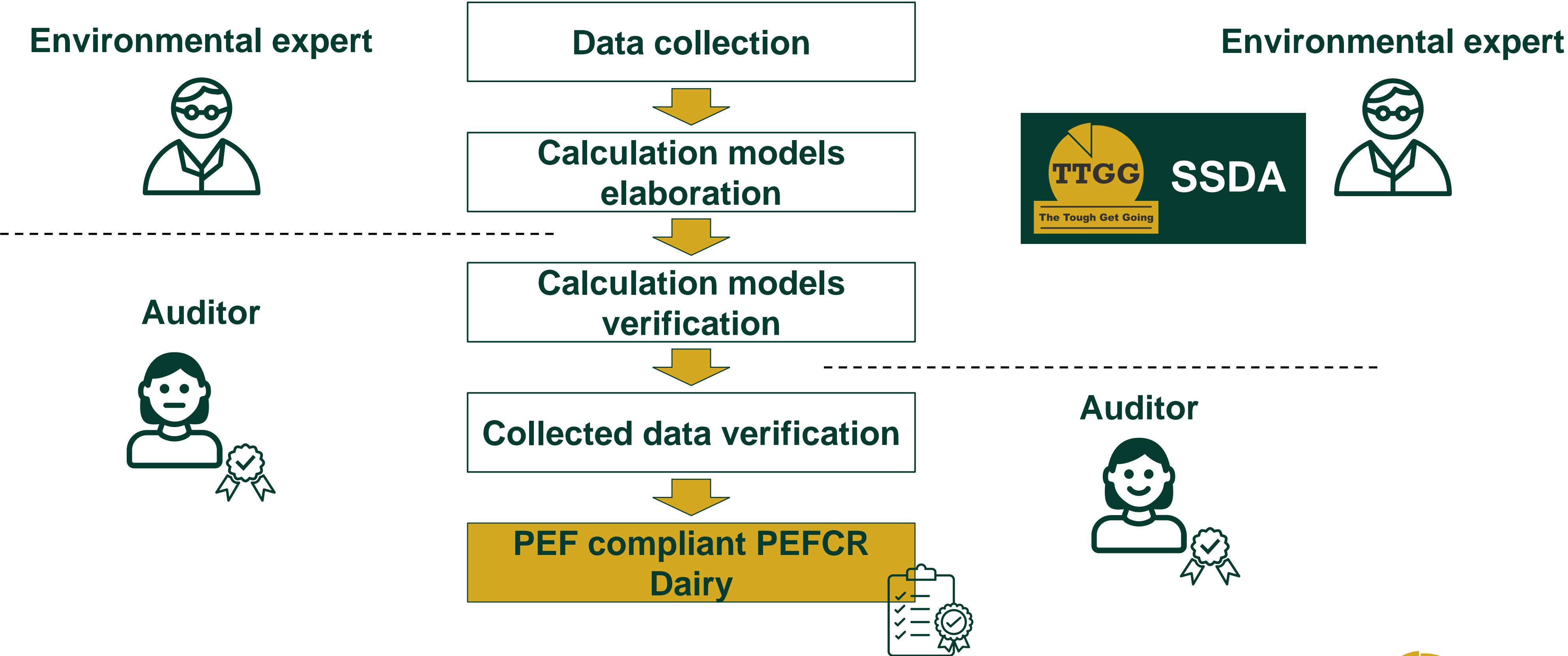
Energy analysis and environmental footprint evaluation report, with state of the art, benchmark comparison and improvement strategies



EDSS users



Why EDSS



Why EDSS

	Without EDSS	With EDSS
Data collection	Guidelines, but room for interpretation	Automatic and standard
Benchmark	Average values at Country or European Union level, often outdated	Average values of the same Consortium and automatically updated
Timing	10-20 workdays	3-5 workdays, depending on company complexity
Verification	Auditor verifies both calculation models and collected data	Calculation models are already verified
Supply chain analysis	Difficult to implement, thus it is simplified	Detailed analysis throughout the entire supply chain
Energy analysis	LCA expert is not often an energy expert	Energy and environmental analysis are integrated in the same tool
Improvement strategies	Rarely present	Automatically generated and tested on the specific supply chain



EDSS tour



EDSS TOOL

Misura l'impronta ambientale del tuo prodotto e scopri le azioni per ridurla!

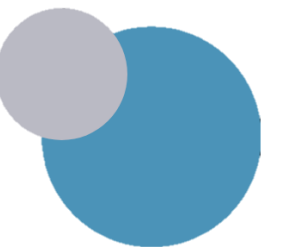
Questo software è rivolto alle aziende coinvolte nella produzione di Grana Padano DOP: allevatori, caseifici e confezionatori. E' frutto del progetto europeo Life TTGG, durato 5 anni dal 2017 al 2022 (www.lifettgg.eu)

[+ Non hai un profilo? Registrati](#)

[Hai un profilo? Entra](#)



LIFE
The
Tough
Get
Going





Thank you
muschera@enersem.eu

